

GENERAL CONDITION NOTES :

1. THE LOCATION OF EXISTING UTILITIES AND TOPOGRAPHY HAS BEEN PREPARED FROM THE MOST RELIABLE INFORMATION AVAILABLE TO THE ENGINEER. THIS INFORMATION IS NOT GUARANTEED AND IT IS THE RESPONSIBILITY OF THE CONTRACTOR TO DETERMINE THE EXACT LOCATION OF ALL EXISTING UTILITIES AND TOPOGRAPHY PRIOR TO CONSTRUCTION.
2. PRIOR TO CONSTRUCTION THE CONTRACTOR IS TO NOTIFY THE FOLLOWING COMPANIES & AGENCIES AND ANY OTHERS SERVING THE AREA:
FLORIDA POWER & LIGHT CO., CONSTRUCTION
SOUTHERN BELL TELEPHONE & TEL. CO.
CABLE CONSTRUCTION BUREAU
LOCAL CITY / COUNTY ENGINEERING & UTILITY DEPARTMENTS
FLORIDA DEPARTMENT OF TRANSPORTATION (FDOT), AS APPLICABLE
UNDERGROUND UTILITIES NOTIFICATION CENTER OF FLORIDA (S.U.N.S.H.I.N.E.)

PAVING, GRADING & DRAINAGE NOTES -

1. ALL UNSUITABLE MATERIALS, SUCH AS MUCK, HARDPAN, ORGANIC MATERIAL & OTHER DELETERIOUS MATERIAL AS CLASSIFIED BY AASHTO M-145, FOUND WITHIN THE ROAD & PARKING LOT AREAS SHALL BE REMOVED DOWN TO ROCK OR SUITABLE MATERIAL, & REPLACED W/ THE SPECIFIED FILL MATERIAL IN MAXIMUM 12" LIFTS COMPACTED TO NOT LESS THAN 100% MAXIMUM DRY DENSITY IN ACCORDANCE W/ AASHTO T-99. THICKNESS OF LAYERS MAY BE INCREASED PROVIDED THE EQUIPMENT & METHODS USED ARE PROVEN BY FIELD DENSITY TESTING TO BE CAPABLE OF COMPACTING THICK LAYERS TO SPECIFIED DENSITIES.
2. ALL AREAS SHALL BE CLEARED & GRUBBED PRIOR TO CONSTRUCTION. THIS SHALL CONSIST OF THE COMPLETE REMOVAL & DISPOSAL OF ALL TREES, BRUSH, STUMPS, ROOTS, GRASS, WEEDS, RUBBISH & ALL OTHER OBSTRUCTION RESTING ON OR PROTRUDING THROUGH THE SURFACE OF THE EXIST. GROUND TO A DEPTH OF 12". ITEMS DESIGNATED TO REMAIN OR TO BE RELOCATED OR ADJUSTED SHALL BE SO DESIGNATED ON THE DWGS.

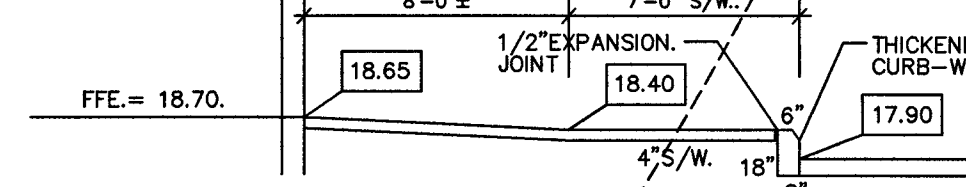
3. FILL MATERIAL SHALL BE CLASSIFIED AS A-1, A-3 OR A-2.4 IN ACCORDANCE W/ AASHTO M-145 & SHALL BE FREE FROM VEGETATION & ORGANIC MATERIAL NOT MORE THAN 12% BY WEIGHT OF FILL MATERIAL SHALL PASS THE NO. 200 SIEVE.
4. THE CONTRACTOR SHALL BE RESPONSIBLE FOR PROVIDING CERTIFIED MATERIAL TEST RESULTS TO THE ENGINEER OF RECORD PRIOR TO THE RELEASE OF FINAL CERTIFICATION BY THE ENG. TEST RESULTS MUST INCLUDE BUT NOT BE LIMITED TO, DENSITIES FOR SUBGRADE & LIME ROCK, UTILITIES, EXCAVATION, ASPHALT GRADATION REPORTS, CONC. CYLINDERS, ETC...
5. ALL INLETS & PIPE SHALL BE PROTECTED DURING CONSTRUCTION TO PREVENT SILTATION IN THE DRAINAGE SYSTEMS BY WAY OF TEMPORARY PLUGS & PLYWOOD OR PLASTIC COVERS OVER THE INLETS. THE ENTIRE DRAINAGE SYSTEM TO BE CLEAN OF DEBRIS PRIOR TO FINAL ACCEPTANCE.
6. WHERE NEW ASPHALT MEETS OR ABUTS EXIST. ASPHALT, THE EXIST. ASPHALT SHALL BE SAWCUT TO PROVIDE A STRAIGHT EVEN LINE PRIOR TO REMOVING CURB OR GUTTER, THE ADJACENT ASPHALT SHALL ALSO BE SAWCUT TO PROVIDE A STRAIGHT EVEN LINE.
7. ALL PROPOSED GRADES (ELEVATIONS) REFER TO FINISHED GRADES (SEE PLAN DWG.)
8. SITE GRADING SHALL BE W/IN 0.1' OF THE REQUIRED ELEVATION & ALL AREAS SHALL BE GRADED TO DRAIN.
9. ALL SUBGRADE SHALL BE COMPACTED TO 100% MAXIMUM DRY DENSITY PER AASHTO T-99.
10. ALL LIMEROCK SHALL BE COMPACTED TO 98% PER AASHTO T-180 & HAVE NOT LESS THAN 60% OF CARBONATES OF CALCIUM & MAGNESIUM UNLESS OTHERWISE DESIGNATED. ALL LIMEROCK SHALL BE PRIMED.
11. CONCRETE & ASPHALT THICKNESS SHALL BE OF TYPE DESIGNATED ON DWGS. (SEE SECTIONS)
12. PLASTIC FILTER FABRIC SHALL BE MIRAFI, TYPAR OR EQUAL CONFORMING TO SECTION 985 OF THE FDOT STANDARD SPECIFICATIONS.

13. CONC. SIDEWALKS SHALL BE 4" THICK ON COMPACTED SUBGRADE, W/ 1/2" EXPANSION JOINTS PLACED AT A MAXIMUM OF 75'. CRACK CONTROL JOINTS SHALL BE 5" ON CENTER. THE BACK OF SIDEWALK ELEVATION SHALL EQUAL THE CROWN OF ROADWAY, UNLESS SPECIFIED OTHERWISE BY LOCAL CODES OR INDICATED ON DWGS. ALL CONC. SIDEWALKS THAT CROSS DRIVEWAYS SHALL BE 6" THICK.
14. PIPE SPECIFICATIONS : THE MATERIAL TYPE IS SHOWN ON THE DRAWINGS BY ONE OF THE FOLLOWING DESIGNATIONS -
RCP = REINFORCED CONC. PIPE, ASTM DESIGNATION C-76, TABLE III
CMP = CORRUGATED METAL (ALUM.) PIPE, ASTM DESIGNATION M-198
SDP = (SMOOTH LINED) CORRUGATED METAL (ALUM.) PIPE, ASTM DESIGNATION M-198
SCP = SLOTTED CONC. PIPE, FDOT SECTIONS 941 & 942
PVC = POLYVINYLCHLORIDE PIPE
PMP = PERFORATED CMP, FDOT SECTION 945
DIP = DUCTILE IRON PIPE
HDPE = HIGH DENSITY POLYETHYLENE
15. ASPHALT -
BITUMINOUS MATERIAL SHALL BE ASPHALT CEMENT, VISCOSITY GRADE AC-20, CONFORMING TO THE REQUIREMENTS OF FDOT STANDARD SPECIFICATIONS, 1996 EDITION, SECTION 916-1.
PRIME COAT SHALL BE CUT BACK ASPHALT, GRADE RC-70 OR RC-250 CONFORMING TO THE REQUIREMENTS SPECIFIED IN AASHTO DESIGNATION M-81-75 (1982). RATE - 0.10 GALS/S.Y.
TACK COAT SHALL BE EMULSIFIED ASPHALT, GRADE RS-2 CONFORMING TO THE REQUIREMENTS SPECIFIED IN AASHTO DESIGNATION M-140-82. RATE - 0.02 TO 0.08 GALS/S.Y.
DESIGN MIX SHALL CONFORM TO FDOT SECTION 331 UNLESS OTHERWISE SPECIFIED.

PAVEMENT MARKING & SIGNING STANDARD NOTES :

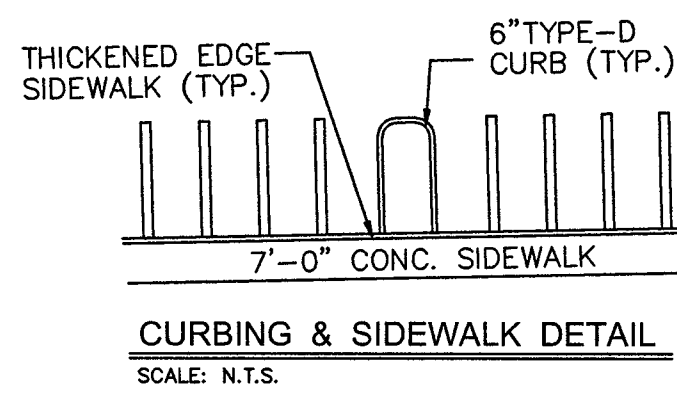
1. STOP SIGNS SHALL BE 30"x30" (R1-1), HIGH INTENSITY.
2. ALL SIGNS SHALL BE PLACED AT A HEIGHT NOT LESS THAN 5' & NOT GREATER THAN 7'. THE HEIGHT IS MEASURED FROM THE BOTTOM OF THE SIGN TO THE EDGE OF NEAREST PAVEMENT. THE SIGN POST SHALL BE PLACED A MINIMUM OF 6' TO A MAXIMUM OF 12' FROM THE ADJACENT PAVEMENT, & A MINIMUM OF 6' FROM THE CROSS TRAFFIC PAVEMENT.
3. STOP BARS SHALL BE 24" WHITE.
4. ALL SITE PAVEMENT MARKINGS SHALL BE THERMOPLASTIC, (UNLESS INDICATED OTHERWISE)
5. ALL PAVEMENT MARKINGS IN THE ROAD RIGHT-OF-WAY SHALL BE THERMOPLASTIC & SHALL CONFORM TO FDOT OR LOCAL CITY/COUNTY STANDARDS.

BLDG. AREA.



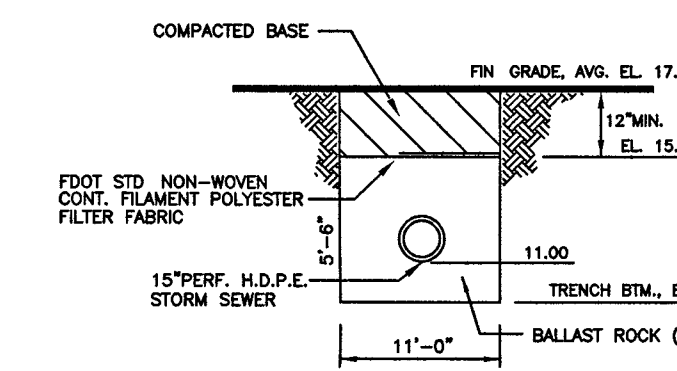
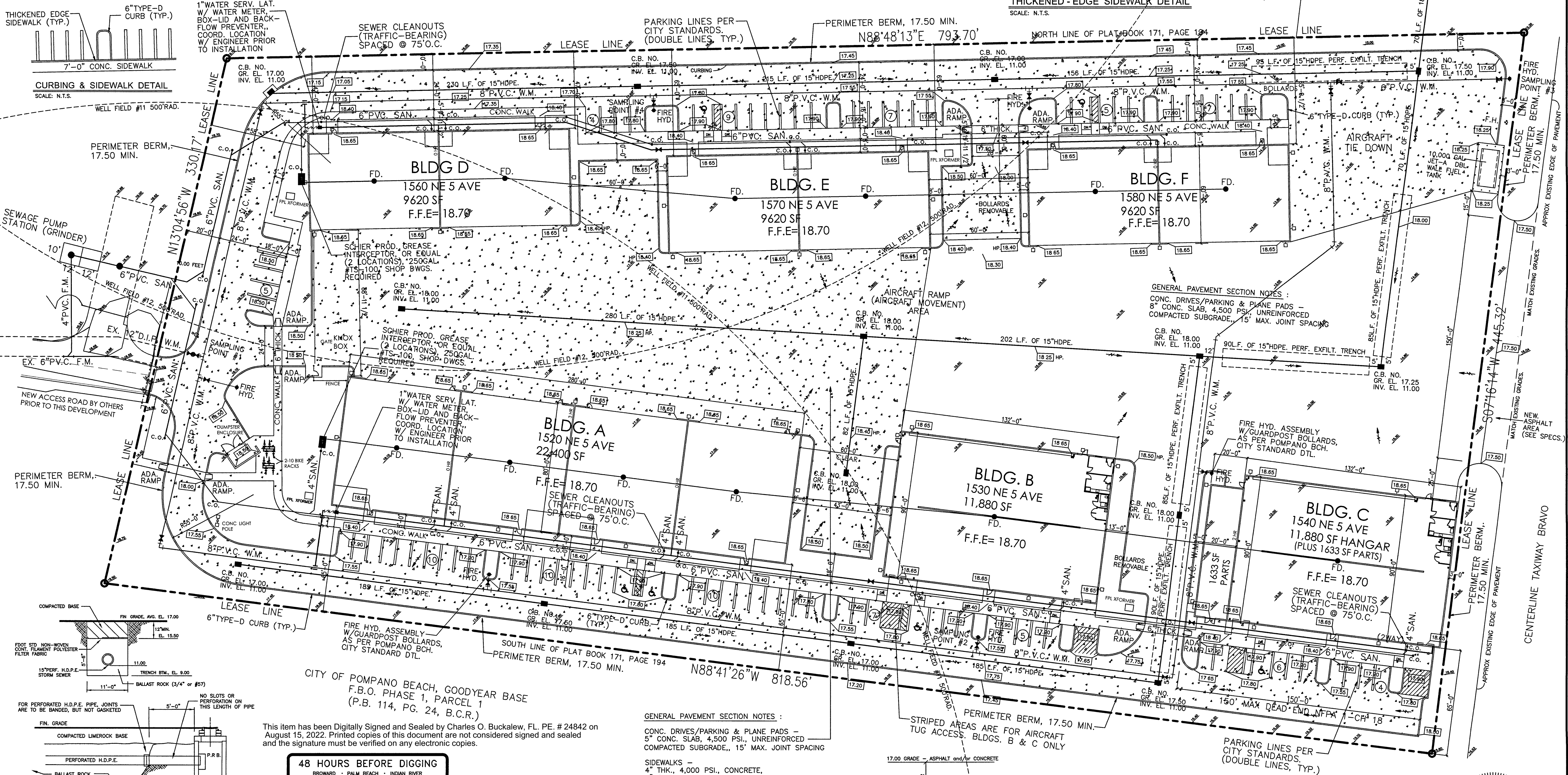
THICKENED - EDGE SIDEWALK DETAIL

SCALE: N.T.S.



CURBING & SIDEWALK DETAIL

SCALE: N.T.S.



EXTRA TRENCH DETAIL

SCALE: N.T.S.

NO SLOTS OR PERFORATION ON THIS LENGTH OF PIPE

FOR PERFORATED H.D.P.E. PIPE, JOINTS ARE TO BE Banded, BUT NOT GASKETED

FIN. GRADE

COMPACTED LIMEROCK BASE

PERFORATED H.D.P.E.

BALLAST ROCK

FOOT STD. NON-WOVEN COM. FILAMENT POLYESTER FILTER FABRIC

SELECT FILL

NO SLOTS OR PERFORATION ON THIS LENGTH OF PIPE

FOR PERFORATED H.D.P.E. PIPE, JOINTS ARE TO BE Banded, BUT NOT GASKETED

FIN. GRADE

COMPACTED LIMEROCK BASE

PERFORATED H.D.P.E.

BALLAST ROCK

FOOT STD. NON-WOVEN COM. FILAMENT POLYESTER FILTER FABRIC

SELECT FILL

CITY OF POMPANO BEACH, GOODYEAR BASE
F.B.O. PHASE 1, PARCEL 1
(P.B. 114, PG. 24, B.C.R.)

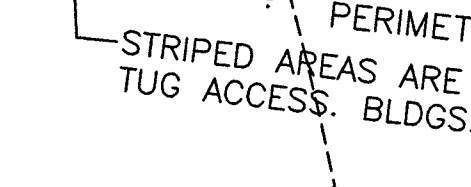
This item has been Digitally Signed and Sealed by Charles O. Buckalew, FL. PE. # 24842 on August 15, 2022. Printed copies of this document are not considered signed and sealed and the signature must be verified on any electronic copies.

48 HOURS BEFORE DIGGING
BROWARD • PALM BEACH • INDIAN RIVER
ST. LUCIE • MARTIN COUNTIES
CALL FREE
1-800-432-4770
S.U.N.S.H.I.N.E. UNDERGROUND UTILITIES
NOTIFICATION CENTER

ALL GRADES REFER TO NAVD. DATUM OF 1988

GENERAL PAVEMENT SECTION NOTES :

- CONC. DRIVES/PARKING & PLANE PADS -
4" THK., 4,000 PSI., UNREINFORCED
COMPACTED SUBGRADE, 15' MAX. JOINT SPACING
- SIDEWALKS -
4" THK., 4,000 PSI., CONCRETE,
6" COMPACTED SAND SUBGRADE
6" THK., 4,000 PSI., (VEHICULAR TRAFFIC)
- CONC. CURBING
TYPE "D" CONC. CURB, IN AREAS SHOWN
STANDARD & SPECIFICATION
POMPANO BEACH
- ASPHALT DRIVES (EXIST. & NEW)
1 1/4" TYPE S
12" COMPACTED SUBGRADE MIN.
COMPACTED TO 98% OF AASHTO T-180.



CONFLICT DETAIL

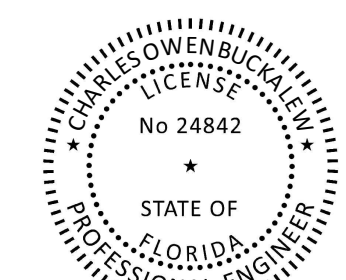
SCALE: N.T.S.

LEGEND - PAVING ::

- LIMITS OF 5" CONC. AREA
- LIMITS OF 8" CONC. AREA
- LIMITS OF ASPHALT AREA

Charles
Buckalew

Digitally signed by
Charles Buckalew
Date: 2022.08.15
12:10:22 -04'00'



005 PAVING, GRADING & DRAINAGE PLAN

REVISIONS	BY
07-06-2022, REVISED PGD PLAN	COB
08-10-2022, REVISED PGD PLAN	COB

SITE IMPROVEMENT PLANS FOR
POMPANO BEACH AIR PARK - PARCEL Y

1520-1580 NE 5th AVENUE, POMPANO BEACH, FLORIDA 33060

Charles O. Buckalew
Consulting Engineering Services, Inc.
801 South Ocean Drive, Suite 201
Hollywood, Florida 33019
C.O.A. Number: 6255
Tele. : (954) 558-1189 Fax. (954) 929-8988



DATE	MAY, 2022
SCALE	1"=30'-0"
BY	C.R.W.
JOB	MA-2285
SHT	PGD-1